

YOUTH EXHIBITS

Supervisors..... Joyce Hulsebos
..... Caramia Martinez

Entry Forms Due: No later than Thursday, April 1st, 2010, 5:00 PM. **Forms may be mailed, faxed or hand delivered to the Showground's Administration Office.** Fax number (805) 569-5595. .

Please do not bring item in at this time.

Uses the Junior Entry Form located in this Entry Handbook, on line @sbfairandexpo.com or get one at the Earl Warren Showgrounds office. The following information **MUST** be included on the form: All personal information (age, grade, etc), division and description of item. Please use a separate form for each child. A separate form must be used for group entries with teacher/leader name.

Entries Received: Home Arts, Fine Arts, Arts & Crafts, and Literature:

Wednesday April 14th 4:00 PM to 7:00 PM
Thursday April 15th 4:00 PM to 7:00 PM
Friday April 16th 4:00 PM to 7:00 PM
Saturday April 17th 9:00 AM to 12:00 PM

Table Settings Received:

Saturday April 24th9:00 AM to 1:00 PM

Baked Goods & Preserved Foods Received:

Saturday. April 24th9:00 AM to 1:00 PM

Please no late entries.

Horticulture & Cut Flowers Received:

Saturday April 24th9:00 AM to 1:00 PM

Entries Released for Pick-up: In Exhibit Building

Monday May 3 12 noon to 6:00 PM

Entry Fees: None

Youth Department Local Rules:

1. This is an open fair. You do not have to be a resident of Santa Barbara County. All items must be pre-entered by April 1st, 5:00 PM
2. Use the entry form provided in this Entry Handbook, or pick up a form at Earl Warren Showgrounds. Please include all personal information, division and description of item. Please use separate entry forms for each child. Use a separate form for group entry with teacher/leader name on form.

3. Bring entries to the Exhibit Building on assigned date & time. **PLEASE NO LATE ENTRIES.**

4. A Junior shall be classified by age groups as of January. 1, 2008:

JUNIOR 1	Ages Preschool, 4, 5, 6,
JUNIOR 2	Ages 7, 8, 9,
JUNIOR 3	Ages 10, 11, 12,
JUNIOR 4	Ages 13, 14, 15,
JUNIOR 5	Ages 16, 17, 18,

5. An exhibitor may only enter 15 items per division except table settings and group projects.
6. All entries must be prepared by the exhibitor within one year prior to the Opening date of the Fair.
7. Exhibitor's name needs to be on the **BACK** of entries.
8. Each entry in these divisions shall be made or fair.
9. The original signature of an **adult** is required on the entry form.
10. All entries will be scored on the Danish system. The Danish system of judging is based upon established standards of quality for each product. In this system, each exhibit is judged according to how well it meets that standard rather than how it compares with other exhibits. The Judges shall use the following guidelines:

1st Superior 92% - 100%
2nd Good 84% - 91%
3rd Average 70% - 83%

11. Exhibitors enrolled in any junior organization for which classes are offered elsewhere are not eligible to enter articles in this department as their Junior Organization Project (I.e. 4-H)
12. The Fair Management shall not be responsible for accidents or losses that may occur to any of the exhibitors or exhibits at a show, and the exhibitors shall hold the management harmless and indemnify it against any legal proceedings arising from such an accident or loss.
13. **All articles must be claimed on Monday May 3rd 12:00 PM to 6:00 PM**
14. All divisions are eligible to receive Best of Show ribbons & awards. Entries for consideration must have received a first place ribbon.

ENTRY FORMS AVAILABLE ON-LINE
@ SBFAIRANDEXPO.COM



COLORING CONTEST

Open to all students, preschool - 6th grade. Please use the form (or a photocopy) located in this Entry Handbook. Rules and entry information are on the back of the form.

FEATURE BOOTHS SCHOOLS, CLUBS & ORGANIZATIONS

FEATURE EXHIBIT BOOTHS DIVISION 260

Set-up, Saturday April 24, 9:00 AM - 1:00 PM

Feature exhibit booths provide schools, clubs & organizations an opportunity to acquaint the public with a specific phase of the club program. The booth can show what they have learned, activities in which they have participated, or contributions of their organization to the community. Judges will insist upon a high quality of products and materials used in the exhibit. A high scoring exhibit will be artistically arranged, colorful, attractive and well lighted.

Rules

1. Pre-enter by April 1, 2010 (Space is limited.) Phone (805) 687-0766 for reservation.
2. Feature booth shall be limited to one entry per school, club or organization.
3. Booth must be designed, constructed and installed by school, club or organization members. Leaders may supervise only.
4. The school, club or organization leader must sign entry forms.
5. All booth materials must be stored within the booth.

ALL PARTICIPANTS MUST BE SUPERVISED CLOSELY BY A RESPONSIBLE ADULT.

CLASS, GROUP OR SCHOOL PROJECTS

A separate entry form is required using Class, Group or Club name. Please list student's names. Use average age of students to enter proper age group. Entries limited to space available. **You may display information on class project i.e., what they were studying, and school information.**

JR. 1	Division 261	JR. 4	Division 264
JR. 2	Division 262	JR. 5	Division 265
JR. 3	Division 263	PC	Division 266

SERVICE-LEARNING EXPOSITION!

Service-learning projects must have occurred from April 2008 to present. Project showcases must include a 36" by 48" tri-fold display board. Other projects or materials used in the project are encouraged for display.

Division 267 - Elementary School Projects
Division 268 - Middle School Projects
Division 269 - High School Projects
Division 270 - Post Secondary School Projects

SCHOOL YEARBOOK AND NEWSPAPER COMPETITION

May be 2008 or 2009 edition. Please use separate entry form. List Adviser's name and school name, address, and phone number and number of students.

Division 271 - Yearbook High School grades 9 – 12
Division 272 - Yearbook Elementary 8th grade
Division 273 - Yearbook Home School
Division 274 - Newspaper High School grades 9 – 12
Division 275 - Newspaper Elementary 8th grade
Division 276 - Newspaper Home School

ARTS & CRAFTS

CERAMICS, CAST PIECES, KILN FIRED

JR. 1	Division 290
JR. 2	Division 291
JR. 3	Division 292
JR. 4	Division 293
JR. 5	Division 294

CERAMICS, ORIGINAL, KILN FIRED

JR. 1	Division 296
JR. 2	Division 297
JR. 3	Division 298
JR. 4	Division 299
JR. 5	Division 300

CLAY ART

JR. 1	Division 302
JR. 2	Division 303
JR. 3	Division 304
JR. 4	Division 305
JR. 5	Division 306

BUILDING SETS

JR. 1	Division 308
JR. 2	Division 309
JR. 3	Division 310
JR. 4	Division 311
JR. 5	Division 312

TINKER TOYS/KIT

JR. 1	Division 338
JR. 2	Division 339
JR. 3	Division 340
JR. 4	Division 341
JR. 5	Division 342

ERECTOR SET/FOLLOWING DIRECTIONS

JR. 1	Division 313
JR. 2	Division 314
JR. 3	Division 315
JR. 4	Division 316
JR. 5	Division 317

TINKER TOYS/FREE STYLE

JR. 1	Division 343
JR. 2	Division 344
JR. 3	Division 345
JR. 4	Division 346
JR. 5	Division 347

Judged on:

1. No missing pieces
2. Accurately built
3. How well constructed
4. Extra scenery ok

ERECTOR SET/FREE STYLE

JR. 1	Division 318
JR. 2	Division 319
JR. 3	Division 320
JR. 4	Division 321
JR. 5	Division 322

HOBBY CRAFTS

JR. 1	Division 348
JR. 2	Division 349
JR. 3	Division 350
JR. 4	Division 351
JR. 5	Division 352

K'NEX

JR. 1	Division 323
JR. 2	Division 324
JR. 3	Division 325
JR. 4	Division 326
JR. 5	Division 327

JEWELRY

JR. 1	Division 353
JR. 2	Division 354
JR. 3	Division 355
JR. 4	Division 356
JR. 5	Division 357

LEGO/BOX SET

JR. 1	Division 328
JR. 2	Division 329
JR. 3	Division 330
JR. 4	Division 331
JR. 5	Division 332

ORNAMENTAL DECORATION

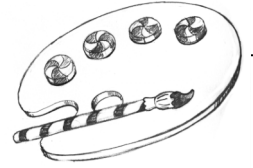
JR. 1	Division 358
JR. 2	Division 359
JR. 3	Division 360
JR. 4	Division 361
JR. 5	Division 362

LEGO/FREE STYLE

JR. 1	Division 333
JR. 2	Division 334
JR. 3	Division 335
JR. 4	Division 336
JR. 5	Division 337

PAPER CRAFT

JR. 1	Division 363
JR. 2	Division 364
JR. 3	Division 365
JR. 4	Division 366
JR. 5	Division 367



FINE ARTS

All framed pictures should be ready to hang, for the safety of your picture. All entries must be **completely** dry. Please label your entry with your name on back.

RUBBER STAMP ART

JR. 1	Division 368
JR. 2	Division 369
JR. 3	Division 370
JR. 4	Division 371
JR. 5	Division 372

STRING ART

JR. 1	Division 373
JR. 2	Division 374
JR. 3	Division 375
JR. 4	Division 376
JR. 5	Division 377

STENCILED ITEMS

JR. 1	Division 378
JR. 2	Division 379
JR. 3	Division 380
JR. 4	Division 381
JR. 5	Division 382

WOODCRAFTS, ORIGINAL

JR. 1	Division 383
JR. 2	Division 384
JR. 3	Division 385
JR. 4	Division 386
JR. 5	Division 387

WOODCRAFTS, PURCHASED

PAINTED/DECORATED

JR. 1	Division 388
JR. 2	Division 389
JR. 3	Division 390
JR. 4	Division 391
JR. 5	Division 392

MISCELLANEOUS ART PROJECTS

JR. 1	Division 393
JR. 2	Division 394
JR. 3	Division 395
JR. 4	Division 396
JR. 5	Division 397

ACRYLIC

JR. 1	Division 398
JR. 2	Division 399
JR. 3	Division 400
JR. 4	Division 401
JR. 5	Division 402

BLACK AND WHITE, ANY MEDIA

JR. 1	Division 403
JR. 2	Division 404
JR. 3	Division 405
JR. 4	Division 406
JR. 5	Division 407

COLORED PENCIL

JR. 1	Division 408
JR. 2	Division 409
JR. 3	Division 410
JR. 4	Division 411
JR. 5	Division 412

COMPUTER GENERATED ART

JR. 1	Division 413
JR. 2	Division 414
JR. 3	Division 415
JR. 4	Division 416
JR. 5	Division 417

COMPUTER ENHANCED ART

JR. 1	Division 418
JR. 2	Division 419
JR. 3	Division 420
JR. 4	Division 421
JR. 5	Division 422

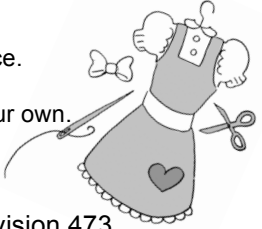
CRAYON

JR. 1	Division 423
JR. 2	Division 424
JR. 3	Division 425
JR. 4	Division 426
JR. 5	Division 427

CLOTHING & TEXTILES

Please indicate on entry form

1. How many years sewing experience.
2. Was it a school project?
3. Did you use a pattern or create your own.



FELT PEN, COLOR

JR. 1	Division 440
JR. 2	Division 441
JR. 3	Division 442
JR. 4	Division 443
JR. 5	Division 444

FINGER PAINTING

JR. 1	Division 446
JR. 2	Division 447

OILS

JR. 1	Division 449
JR. 2	Division 450
JR. 3	Division 451
JR. 4	Division 452
JR. 5	Division 453

PASTELS

JR. 1	Division 455
JR. 2	Division 456
JR. 3	Division 457
JR. 4	Division 458
JR. 5	Division 459

WATERCOLORS

JR. 1	Division 461
JR. 2	Division 462
JR. 3	Division 463
JR. 4	Division 464
JR. 5	Division 465

MIXED TECHNIQUE

JR. 1	Division 467
JR. 2	Division 468
JR. 3	Division 469
JR. 4	Division 470
JR. 5	Division 471

KNITTING

JR. 1	Division 473
JR. 2	Division 474
JR. 3	Division 475
JR. 4	Division 476
JR. 5	Division 477

NEEDLE ART

JR. 1	Division 479
JR. 2	Division 480
JR. 3	Division 481
JR. 4	Division 482
JR. 5	Division 483

SEWING

JR. 1	Division 485
JR. 2	Division 486
JR. 3	Division 487
JR. 4	Division 488
JR. 5	Division 489

COLLECTIONS

Rules:

Give a brief description of your collection (i.e. why it is important to you, how the collections started, etc.)

JR. 1	Division 491
JR. 2	Division 492
JR. 3	Division 493
JR. 4	Division 494
JR. 5	Division 495

HISTORY

JR. 1	Division 497
JR. 2	Division 498
JR. 3	Division 499
JR. 4	Division 500
JR. 5	Division 501

MISSIONS

JR. 1	Division 503
JR. 2	Division 504
JR. 3	Division 505
JR. 4	Division 506
JR. 5	Division 507

LITERATURE

If written in a language other than English, English translation must accompany the paper.

CREATIVE WRITING, FICTION

- JR. 1 Division 509
- JR. 2 Division 510
- JR. 3 Division 511
- JR. 4 Division 512
- JR. 5 Division 513

CREATIVE WRITING, NON FICTION

- JR. 1 Division 515
- JR. 2 Division 516
- JR. 3 Division 517
- JR. 4 Division 518
- JR. 5 Division 519

CREATIVE WRITING, WITH PROPS

- JR. 1 Division 521
- JR. 2 Division 522
- JR. 3 Division 523
- JR. 4 Division 524
- JR. 5 Division 525

POETRY

- JR. 1 Division 527
- JR. 2 Division 528
- JR. 3 Division 529
- JR. 4 Division 530
- JR. 5 Division 531



CREATE A PICTURE BOOK

Rules:

1. To be designed as a book or an illustrated manuscript.
2. Must have a rigid cover. Example: sewn, staples or in a binder.
3. Text may be typed or printed.

- JR. 1 Division 533
- JR. 2 Division 534
- JR. 3 Division 535
- JR. 4 Division 536
- JR. 5 Division 537

PHOTOGRAPHY

Photography Local Rules:

1. Titles are encouraged.
2. We encourage mounting with no mount larger than 16 x 20 or no smaller than 5 X 7. Maximum width of matting 3". Directional arrow on prints in question as to how to hang. No pictures of pictures are permitted.
3. No print previously entered in the Santa Barbara Fair & Expo is eligible. Prints to be taken between April 1st, 2009 and Fair 2010.
4. All possible care will be given to all prints entered. However, the Fair can not accept responsibility for any loss or damage.

BLACK AND WHITE

- JR. 1 Division 539
- JR. 2 Division 540
- JR. 3 Division 541
- JR. 4 Division 542
- JR. 5 Division 543
- PC Division 544

COLOR

- JR. 1 Division 545
- JR. 2 Division 546
- JR. 3 Division 547
- JR. 4 Division 548
- JR. 5 Division 549
- PC Division 550

POLAROID

- JR. 1 Division 551
- JR. 2 Division 552
- JR. 3 Division 553
- JR. 4 Division 554
- JR. 5 Division 555
- PC Division 556

PHOTO STORY

A series of 3 to 5 pictures that tell a story. Nature's Seasons, flower's progression, child's first haircut, etc. mounted individually or grouped in one display and numbered in proper sequence.

- JR. 1 Division 557
- JR. 2 Division 558
- JR. 3 Division 559
- JR. 4 Division 560
- JR. 5 Division 561

UNDERWATER

- JR. 1 Division 563
- JR. 2 Division 564
- JR. 3 Division 565
- JR. 4 Division 566
- JR. 5 Division 567

COMPUTER ENHANCED

- JR. 1 Division 569
- JR. 2 Division 570
- JR. 3 Division 571
- JR. 4 Division 572
- JR. 5 Division 573

SCIENCE

Not limited to just Collections. Collections must have been collected within two years of the opening day of the fair.

ENTOMOLOGY

- JR. 1 Division 576
- JR. 2 Division 577
- JR. 3 Division 578
- JR. 4 Division 579
- JR. 5 Division 580

FORESTRY

- JR. 1 Division 582
- JR. 2 Division 583
- JR. 3 Division 584
- JR. 4 Division 585
- JR. 5 Division 586

WILDLIFE

- JR. 1 Division 588
- JR. 2 Division 589
- JR. 3 Division 590
- JR. 4 Division 591
- JR. 5 Division 592

MARINE SCIENCE

- JR. 1 Division 594
- JR. 2 Division 595
- JR. 3 Division 596
- JR. 4 Division 597
- JR. 5 Division 598

COMPUTER SCIENCE

- JR. 1 Division 600
- JR. 2 Division 601
- JR. 3 Division 602
- JR. 4 Division 603
- JR. 5 Division 604

ROCKETRY, AEROSPACE

- JR. 1 Division 606
- JR. 2 Division 607
- JR. 3 Division 608
- JR. 4 Division 609
- JR. 5 Division 610

ELECTRICITY

- JR. 1 Division 612
- JR. 2 Division 613
- JR. 3 Division 614
- JR. 4 Division 615
- JR. 5 Division 616

ENVIRONMENTAL FRIENDLY

- JR. 1 Division 618
- JR. 2 Division 619
- JR. 3 Division 620
- JR. 4 Division 621
- JR. 5 Division 622

MISCELLANEOUS PROJECTS

- JR. 1 Division 624
- JR. 2 Division 625
- JR. 3 Division 626
- JR. 4 Division 627
- JR. 5 Division 628

BAKED & PRESERVED FOODS

ALL ENTRIES MUST HAVE LIST OF INGREDIENTS INCLUDED WITH ENTRY.

Entries Received: Saturday, April 24, 9AM – 1:00 PM
 Entries should consist of: Six (6): cookies, candies, bars
 Three (3): cupcakes, muffins, biscuits, one half (1/2): loaf bread, cake, pie

Whole-decorated cake may use dummy base. All baked items except decorated cakes should be on pie pans, or plates, which are disposable. Please cover with any saran wrap, baggy, etc. **EXCEPTION:** Decorated Cakes. **NO** refrigerated items.

Please use icing that will hold up during fair time. Royal or Butter cream icing would be recommended. These are available at any cake supply store. **Any entry without ingredient list will be turned away.**

CONFECTIONS

R. 1	Division 630
JR. 2	Division 631
JR. 3	Division 632
JR. 4	Division 633
JR. 5	Division 634

DECORATED ITEMS

JR. 1	Division 636
JR. 2	Division 637
JR. 3	Division 638
JR. 4	Division 639
JR. 5	Division 640

BAKED GOODS

JR. 1	Division 642
JR. 2	Division 643
JR. 3	Division 644
JR. 4	Division 645
JR. 5	Division 646

PRESERVED FOODS

JR. 1	Division 648
JR. 2	Division 649
JR. 3	Division 650
JR. 4	Division 651
JR. 5	Division 652

No preserved meat, fowl or fish accepted. Each exhibitor must bring two jars of preserved foods. One jar will be opened and judged the other for display. All opened jars must be picked up by April 27. Any jars not picked up by that time will be discarded. Entry Sheets must list the type of produce and the method or process used. Low acid foods must be canned under pressure, no paraffin seals. All canning exhibits must be sealed jars. All dried food in 1/2 pint jars. Please place a label with your name on the bottom of your jars.



TABLE SETTINGS

Single Place Setting

JR. 1	Division 654
JR. 2	Division 655
JR. 3	Division 656
JR. 4	Division 657
JR. 5	Division 658

Four Place Settings

JR. 1	Division 660
JR. 2	Division 661
JR. 3	Division 662
JR. 4	Division 663
JR. 5	Division 664

Table settings to be received: Saturday April 24 between 9:00 AM and 1:00pm. For single place settings, an 18"x22" tabletop will be provided for your use. Your layout should include one or two place settings and your centerpiece. A 48" x 30" table will be provided for the four place settings categories. All work must be done by the exhibitor. Tablecloth should have 10-14" overhang or a tabletop size cover, any texture. Check a cookbook for proper table settings.

HORTICULTURE

Entries Received:

Saturday, April 24, 9:00 AM – 1:00 PM.

Rules:

1. Entries must have been grown by the exhibitor.
2. All State rules apply. (Available upon request)
3. Please place on a disposable plate.

POTTED PLANTS

DIVISION - 666 - 12 YEARS OF AGE & UNDER.
DIVISION - 667 - 13-18 YEARS OF AGE.

ARRANGEMENTS

Entries Received:

Saturday, April 24, 9:00 AM – 1:00 PM

DIVISION - 668 - 12 YEARS OF AGE & UNDER.
DIVISION - 669 - 13 - 18 YEARS OF AGE

CUT FLOWERS

No pre-entry

DIVISION - 670 – 12 YEARS OF AGE & UNDER
DIVISION - 671 – 13-18 YEARS OF AGE

DRESS YOUR FAVORITE FROUT OR VEGETABLE

Fruit/vegetable must be dressed. You may purchase your fruit/vegetable.

DIVISION – 672 – 12 YEARS OF AGE & UNDER
DIVISION – 673 – 13-18 YEARS OF AGE

PRODUCE CHARACTERS

DIVISION - 674 – 12 YEARS OF AGE & UNDER
DIVISION – 675 – 13-18 YEARS OF AGE

Produce characters must be reinforced and placed on a strong and disposable base not to exceed 12" X 16". Only all natural materials allowed.

FRUITS & VEGETABLES

Entries Received:

Saturday, April 24, 9:00 AM – 1:00 PM

DIVISION 676- CITRUS

DIVISION - 677 - SUBTROPICAL

DIVISION – 678 - PLATE DISPLAY

DIVISION – 679 - AVOCADOS

DIVISION - 680 - VEGETABLES

DIVISION – 681 - UNUSUAL OR LARGEST FRUIT OR VEGETABLE